



THE SPRING LAKES PARK

GAZETTE

AN AGE 55 COMMUNITY

SLP Contact Information

Park Office: 438-2407

After hours Park Assistant Manager: 818-0902

Contacting the Management Committee: mc@springlakespark.net

OUR 52nd Year

Feb. 21, 2025

WEEKLY ACTIVITIES

<u>FRI. FEB. 21</u>	
EXERCISE CLASS	10:00AM
<u>SAT. FEB. 22</u>	
<u>SUN. FEB. 23</u>	
<u>MON. FEB. 24</u>	
EXERCISE CLASS	10:00 AM
BILLIARDS	1:00 PM
<u>TUES. FEB. 25</u>	
MGMT. COMM. MEETING	10:00 AM
AERO. CLASS	Cancelled
CHAIR YOGA CLASS	3:00 PM
<u>WED. FEB. 26</u>	
CHOIR PRACTICE	10:30 AM
BUNCO	1:30 PM
<u>THURS. FEB. 27</u>	
JAZZ CONCERT	4:00 PM
<u>FRI. FEB. 28</u>	
EXERCISE CLASS	10:00 AM

HAPPY BIRTHDAY

MICHELE BOYNTON	24 TH
SUSAN HIMELICK	26 TH
DIANE LOPEZ	27 TH
PAULINE ROSS	28 TH
JIM JORRICK	1 ST
YVONNE NELSON	1 ST

HOMES FOR SALE



34, 36, 40, 65 & 90

Management Committee monthly meeting, Tuesday, February 25th at 10:00am

Update from the Management Committee



Speeding continues to be a dangerous and persistent problem on our roads. Although we are aware that much of this can be attributed to various delivery trucks, please do your part to keep your vehicle speed to 10 mph and encourage your guests and visitors to do the same.

Thank you!

The security cameras on the premises are all in working order, and we will be monitoring the videos regularly.

Pool Repairs: We have been notified that the 50+ year old copper pipes have been leaking pool water. We have contracted with a company to replace these pipes. The cost of this work is under \$10,000.00 and work will begin as soon as we can get on their schedule.

Chair Yoga, Mindfulness Living, Meditation

The next Chair Yoga class will be on Feb. 25th at 3pm and will continue weekly on Tuesdays at 3pm in the clubhouse.

Reservations required. Please RSVP by Tuesday morning with Tamara at 510-978-8588. If you must cancel, please call Tamara in advance.

Thank you!



BUNCO - Wednesday, Feb. 26, 2025, at 1:30pm in the Club House. If you are new to the game, please arrive at 1pm for instructions. The cost is \$5.00.

PLEASE RSVP by the 21st to Sandy Payton 831-461-1380.

YOU'RE INVITED!



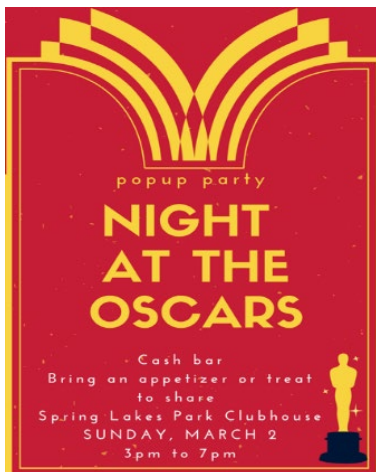
SPOTLIGHT ON DUKE ELLINGTON
THE MASTER COMPOSER OF JAZZ
SPRING LAKES PARK CLUBHOUSE
THURSDAY, FEBRUARY 27th 4 – 6:30 pm
St. Thomas, Virgin Islands Prominent Bassist
Reuben Rogers

Known for his Distinctive Style Combining Calypso, Reggae, Gospel and Jazz.
Jon Dryden, piano, Zack Olsen, drums, Ben Herod, saxophone, Andrea Claburn, vocals.

PLEASE JOIN US FOR THIS FREE OFF THE CHARTS SESSION!

Sponsored by the William H. Nadeau Memorial Fund Promoting and Rewarding Excellence in
Jazz Performance.

Bar Open for Beverage Purchases. Complimentary Snacks.



NIGHT AT THE OSCARS PARTY
SUNDAY, MARCH 2nd, 3 to 7pm

Do you love the movies? Enjoy talking about them with your friends? Come to Spring Lakes Park's **Night at the Oscars Party**. We'll begin by watching (and gossiping) about Red Carpet looks, then hang around to hear host Conan O'Brien start out the night. Some die-hards will probably stay 'til the very end (7pm) but it's not a requirement.

Please bring an appetizer or treat to share. Cash bar open from 3 to 6pm. Dress up if you'd like, wear your best bling, and enjoy watching the Oscars with your neighbors.

Questions? Email or text June Langhoff junelanghoff@gmail.com, 295-4537.

FILM & FOOD

Introduction only ~ Monday, March 3rd 5pm to 7pm at the Clubhouse

This class will be offered on the first Monday of each month.

Tamara will share the cultural significance of food and film as well as perspective.

Will be similar to a book club.

Once a film is chosen (by the group), the partners will meet the following month on Monday.

Partners will watch the film on their own time or with others and bring a dish to share related to the film and be prepared to collectively discuss their own perspectives.

If it's a French film, each partner brings a French dish to share.

PLEASE RSVP NO LATER THAN THE MORNING OF THE EVENT! If you need to cancel, please call Tamara in advance. If you have already RSVP, please confirm by Monday morning so I have an accurate count. Tamara: 510-978-8588

If one has allergies, special diets, health concerns they are still welcome to attend and bring their own special dish and perspective.

SPECIAL NOTE: ALL CLASSES ARE FRAGRANCE FREE. THIS INCLUDES COLOGNE, PERFUME, LOTIONS AND HAIR PRODUCTS

WINTER BIRD REPORT 2024-25



We spotted 52 bird species in our park in November, 57 in December and 52 in January. Rare or first-time sightings: Say's Phoebe, Osprey, Sharp-shinned Hawk, Cackling Goose, White-throated Sparrow, Red-breasted Sapsucker, California Thrasher.

The Red-breasted Sapsucker has a scarlet head and chest and a checkerboard pattern on its back. Sapsuckers drill rows of shallow wells in trees and then lap up the sap with their brush-tipped tongues. "Our" sapsucker has been seen in trees on the north side of the lower lake and on the bridgeless island.

Here's some of the birds seen in the park in the past three months: Townsend's & Yellow-rumped Warblers, Northern Flicker, Ruby-crowned Kinglet, Western Bluebird, Hermit Thrush, Great Horned Owl, American Robin, Band-tailed Pigeon, Black-crowned Night Heron,

Great Blue Heron, Green Heron, Bufflehead, Northern Mockingbird, Oak Titmouse, Cedar Waxwing, Purple Finch, Pine Siskin, Lesser & American Goldfinches, Red-shouldered, Cooper's & Red-tailed Hawks, Belted Kingfisher, Ring-neck Duck, Common & Hooded Mergansers, Common Goldeneye, Great Egret, Nuttall's, Downy, Hairy & Acorn Woodpeckers, Steller's & Scrub Jays and American Kestrel.

Submitted by June Langhoff, with input from Bonnie W, Leslie & Tim W, Mary F & Deborah B
Photo credit Red-breasted Sapsucker, Grace Oliver (Macaulay Library)



SAVE THE DATE

Thursday, March 6th 4:00 – 6:30 pm

Spring Lakes Clubhouse

THE BEN FLOCKS BAND

Saxophonist Ben Flocks captivates audiences around the world with his soulful sound. Born in Santa Cruz, residing in New York and Los Angeles, Ben has led his band at the Monterey Jazz Festival and the Bern Festival in Switzerland and has performed with Dave Brubeck.

Incredibly talented band members include Jon Dryden, piano, Scott Colberg, bass, Ben Ring, drums, Miranda Perl, vocals.

COMPLIMENTARY SALAD BUFFET

Sponsored by the William H. Nadeau Memorial Fund



GREENWASTE TRUCKS

As we all know, Green Waste trucks pick up our garbage every Friday morning.

What you might not be aware of is those same trucks are leaking hydraulic fluid or fuel every time they stop to pick the cans up. (See Photos)!

This happens 223 times here in the park, and all through Scotts Valley.

I have contacted Green Waste about this problem in the past. I have not received much of a response back.

I have no idea if the leaks have been fixed, or if the truck was moved to a different route.

I have reported this issue to the SVPD. I was told that the PD would be making a call to Green Waste about this. The Officer also recommended that if more residents of Spring Lakes Park reported this problem to Green Waste when it happens, Green Wasted might take it more seriously!

Please, when you bring your cans in, look to see if any fuel has been spilled. And then report it (pictures help) to Green Waste, and to the management committee.

I spoke with Officer Walsh Badge #76, SVPD 2-7-25 -Pete Peterson, Space 69

Our Water Ways
Our Water Ways
February 21, 2025

Q: How does SLP manage risks of erosion and flood (Why is Upper Lake full of water)?



SLP continues established practices to manage the risks of erosion and flood. To do so, we increase the capacity for stormwater at the lowest drainage point in the park, Lower Lake. This increased capacity allows Lower Lake to accommodate atmospheric rivers, which have submerged its smaller island. We increase Lower Lake capacity by pumping excess water into Upper Lake. When water overflows this capacity, it is released to Camp Evers Creek.

The park has purchased no recycled water since October. The water in the lakes and ponds now is a gift of nature. Rain has fallen into our lakes and ponds, stormwater has drained into them from streets and surrounding land, and the highest water has overflowed or been pumped among them.

Upper Lake is full enough for frogs, ducks and our swan. It's full enough to run the blue, spray, recirculating fountain. Water higher than the culvert drains into Upper Stream, and the rest evaporates and percolates. Due to these losses, the water level dropped 8 inches from February 13 to 18.

Water in Lower Lake can be pumped into Upper Lake. It must be deep enough to prevent pumps from burning out. All water that splashes into Upper Lake out of the rock fountain (left of photo) and that flows from the two pipes (upper right of photo) comes from Lower Lake. During a storm, excess water drains from the culvert into Upper Stream and then into Lower Lake.

Moving Lower Lake water into the Upper Lake increases Lower Lake's capacity. Also, Upper Pond helps increase Lower Lake capacity by holding stormwater that would otherwise flow to Lower Lake. With greater capacity, Lower Lake can hold more new stormwater before it overflows into Lower Pond, then into the Intake Pond, and out to Camp Evers Creek.

To chat or tour the basin, call Leslie Willoughby, Chair of the Lakes Committee, during the committee's final recommendations, at (760) 709-6599. 🐼



SPRING LAKES PARK, A General Partnership
225 Mount Hermon Road
Scotts Valley, Ca 95066
PH. (831) 438-2407 ~ Email: officemanager@springlakespark.net

February 21, 2024

Two things of interest to you, the Partnership:

One, we have sent all the year-end information to the accountant and their office has completed the K1's. They are available to pick up at the office when requested. If you prefer to have it emailed you may call Mary in the office, 438-2407 or email your request to officemanager@springlakespark.net

Two, by this letter, we are advising you that we paid property taxes last year (2024) for the partnership and you as partners can include your portion as a deduction. To calculate your portion, multiply the number stated on your **2024** Rent Statement for **Property Tax** times 12 months. This will give you the amount which you can use as a deduction on your Schedule A tax form if you itemize deductions. *Example: If the Property Tax line item on your rent statement is \$21.75, multiply by 12 months, your deduction is \$261.00.* This is in addition to the property tax you pay direct to the county for your Manufactured Home. This number will not be included in the K1 statement, so you will want to keep this letter with your tax documents for your tax preparer.

Alyce Fackler
Treasurer, Finance Committee